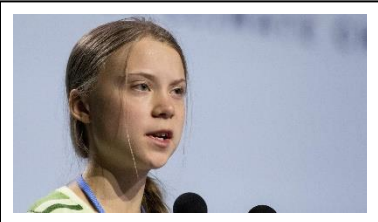


Greta Thunberg

Our significant person this term is Greta Thunberg. We will continue to work like she has by developing our knowledge of electricity and renewable energy. We will also use her speeches to identify and develop our own persuasive writing .

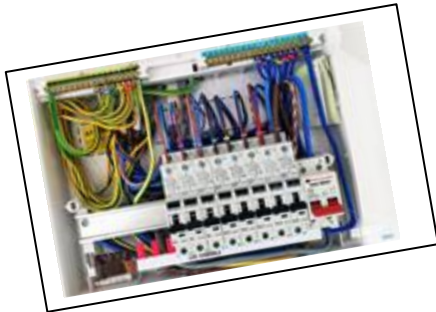


Music

This term we will continue to develop our ability to play the ukulele and will progress from playing specific chords to switching between different chords and ultimately performing a song.

Can electricity save the world?

Last term we looked at the impact electrical advancements have had on a global scale. We paid particular attention to its potential in combatting climate change. This term, we change our focus onto the electrical circuits that impact our lives on a daily basis. We will be testing whether certain materials are conductors or insulators and use this understanding to develop, create and test our own switches.



Computing

In computing we will use our understanding of algorithms and coding to create a maze game, based on the Ancient Greek myth 'Theseus and the Minotaur.'

History

We will we continue to focus on the Ancient Greeks and their influence on us today. We will learn about famous Greek wars, including the Battle of Marathon and how theatre was a big part of Greek society.

Key Vocabulary

Where?

biomass plant United States Greece
power plant electrical grid transformer
homes Sandwich Dover

When?

1809 1879 1940 2020
historically recently

What like?

conductor insulator open closed
renewable non-renewable battery
powered mains powered

What?

circuit electricity mains pylons switch
motor buzzer device components
connection appliance energy

Who?

Greta Thunberg Ben Franklin Michael
Faraday Thomas Edison William
Gilbert

How?

investigate persuade explore sort
describe question sequence tell
retell research explain record

Taking part in Sports Hall activity challenges in PE to develop our co-ordination and agility.